

# MODULE 10 L04

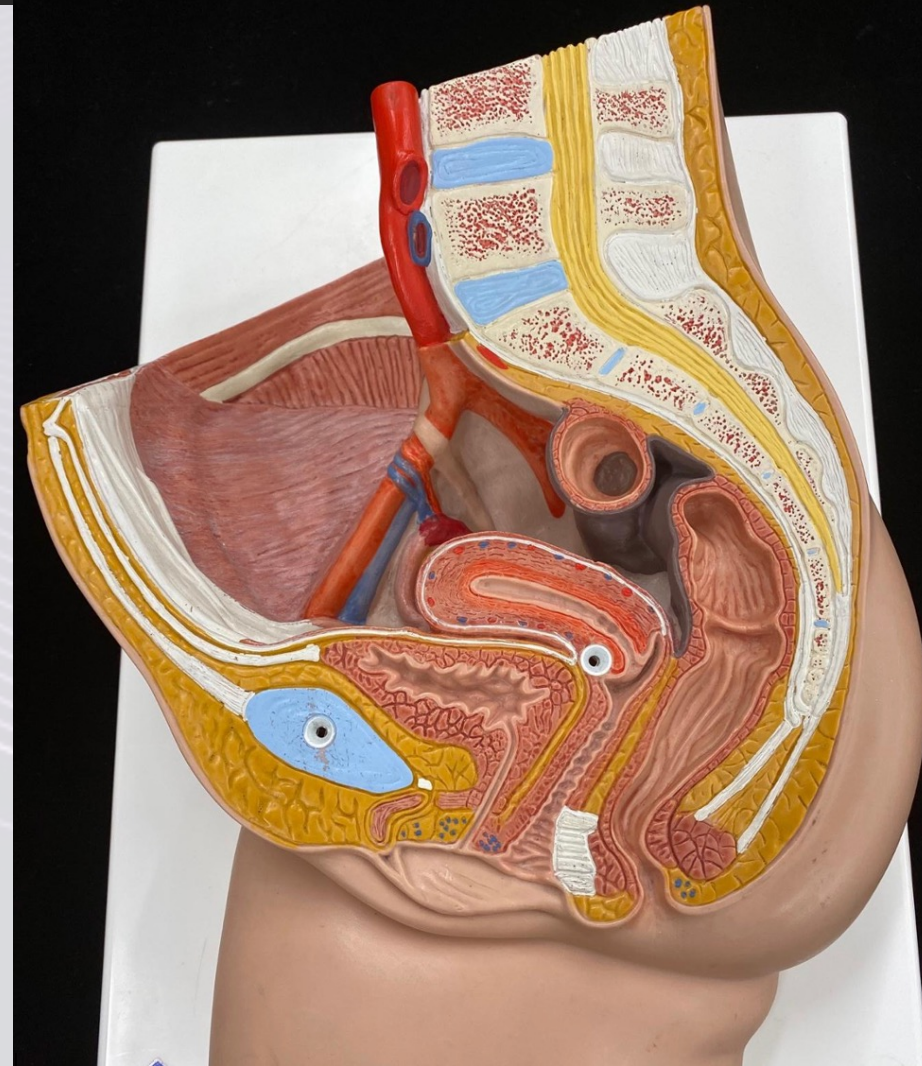
## Digestive System: Large Intestinal Functions

Dr. Lisa Brinn  
[lbrinn@fiu.edu](mailto:lbrinn@fiu.edu)



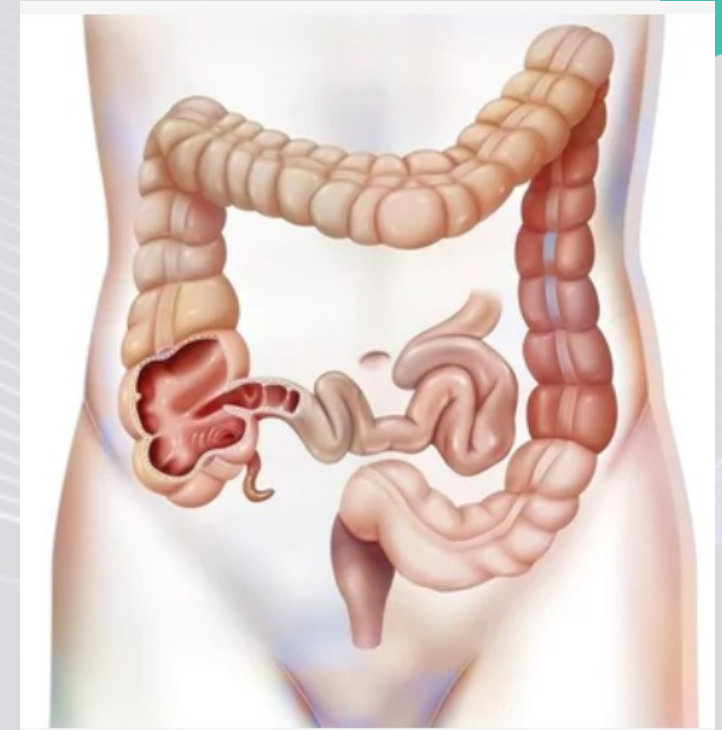
# Large Intestine Digestive Functions

- Finish absorption of nutrients
- Absorption of water and electrolytes
- Form feces
- Eliminate feces from the body
  - ❖ Through anus



# Mechanical Digestion

- Trigger:
  - Chyme in the stomach → peristalsis in ileum → chyme enters cecum
- Chyme in cecum
  - Initiates peristalsis in colon
- Types of movements:
  - A. Peristalsis
  - B. Haustral contraction
  - C. Mass movement
    - Gastrocolic reflex
- Defecation
  - Valsalva's maneuver





# Chemical Digestion

- Glands secrete mucus
  - ❖ Not enzymes
- Chemical digestion
  - ❖ Bacteria
    - Process known as saccharolytic fermentation
      - Bacteria break down carbohydrates



- Products: hydrogen, CO<sub>2</sub>, methane gases



flatus → flatulence (excessive flatus)